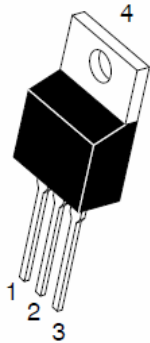
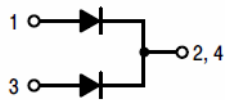


TO-220AB
TSR / & 7



ITO-220AB
TSR / & F



Features

- ‡ \$GYDQWUHGQFK WHFKQRORJ\
- ‡ /RZRUZDYGWDJH GURS
- ‡ /RZRZIDRVVHV
- ‡ +LJHILFLHQF\ RSHUDWLRO
- ‡ /HDGH)HLQLVK &RPSOLDQW

Applications

- ‡ '&' & RQYHUWHUV
- ‡ \$&' & GDSWRUV
- ‡ 6ZLWFKRQHSXSSOLHV
- ‡)UHHZKH'HLQGHV

Maximum ratings and electrical characteristics (T_J = 25°C unless



RATINGS AND CHARACTERISTICS CURVES 7\$ f & X Q O H V Q R W K B U Z L V H

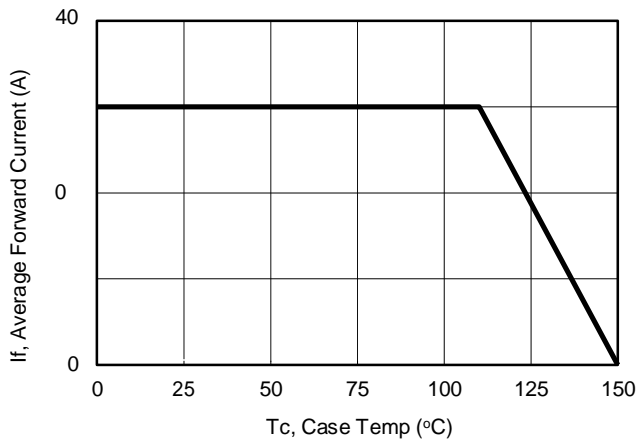


Figure1: Current Derating, Case

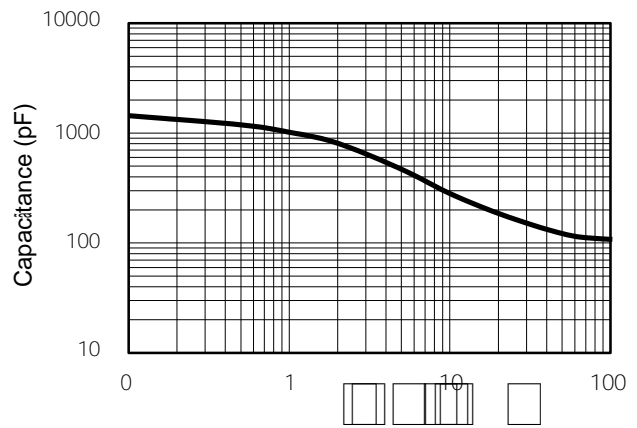


Figure2: Typical Junction Capacitance

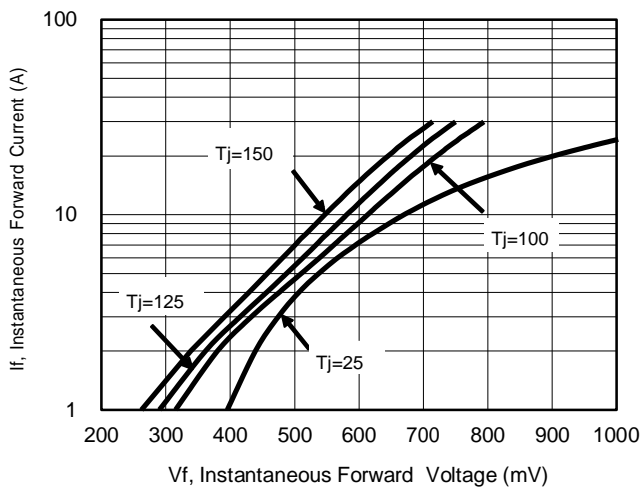


Figure3: Typical Forward Voltage

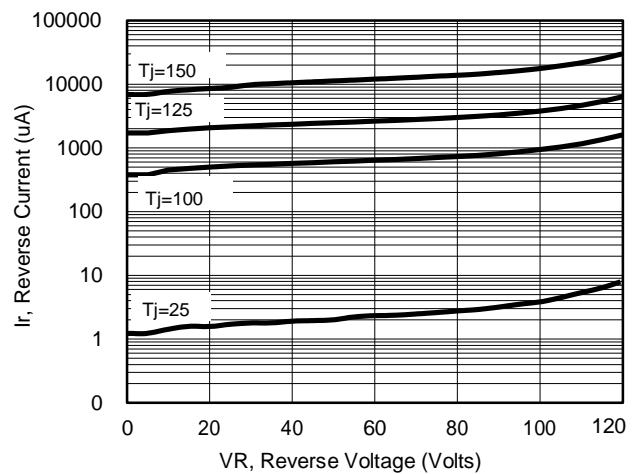
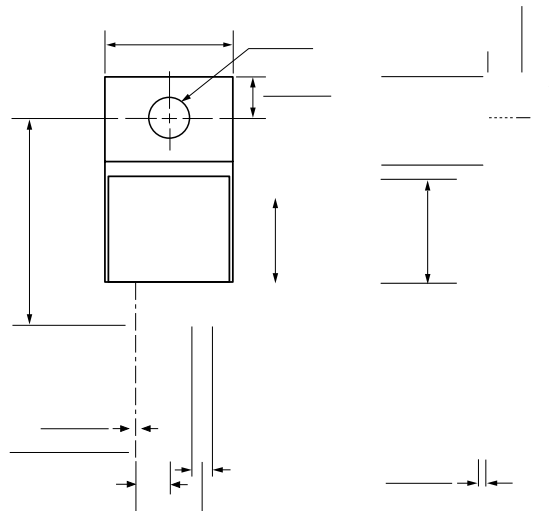


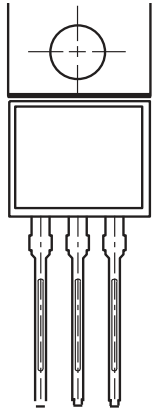
Figure4: Typical Reverse Current

PACKAGE OUTLINE DIMENSIONS

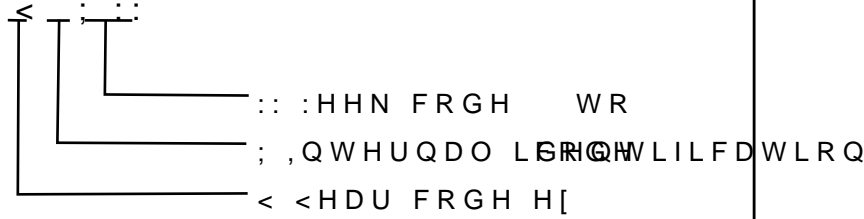
P ð p Ä WHUQ@WLRQ@O



Marking Information

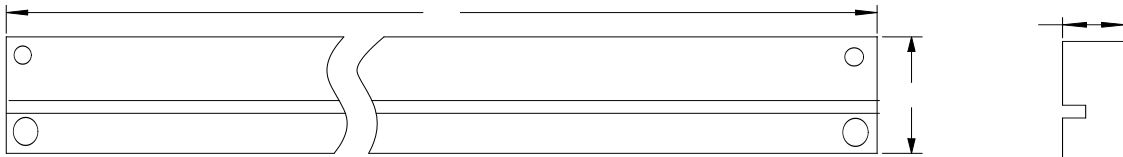


: &RPSDQ\ V WUDGHPDUN
 8 3URGXFW 765 G/HO&7 RU 765 &7)
 9 3'& LQIRUPDWLRQ



Packaging Information

7XEH 'LPHQVLRQV



,QVLGH %R[

2XWVLGH %R[

Packaging Information

12	81,	7XEH 'LPHQVLRQV			,QVLGH %R[2XWVLGH %R[
6 LH	PP	\$	%	&	/	:	+	/	:	+
47<	3&6	3&6 7XEH			6PDO SHFWDJH3&6 WXEORWDO			3&6 FDUERGLWRWDO		
1RWH		7ROHUDQFH PP" PP			PP" PP			PP" PP		